

Funksjoner - Tuning

Tuning av Polynomfunksjon

$$f(x) = ax^3 + bx^2 + cx + d$$

$f(x) \pm k$ flytter vertikalt

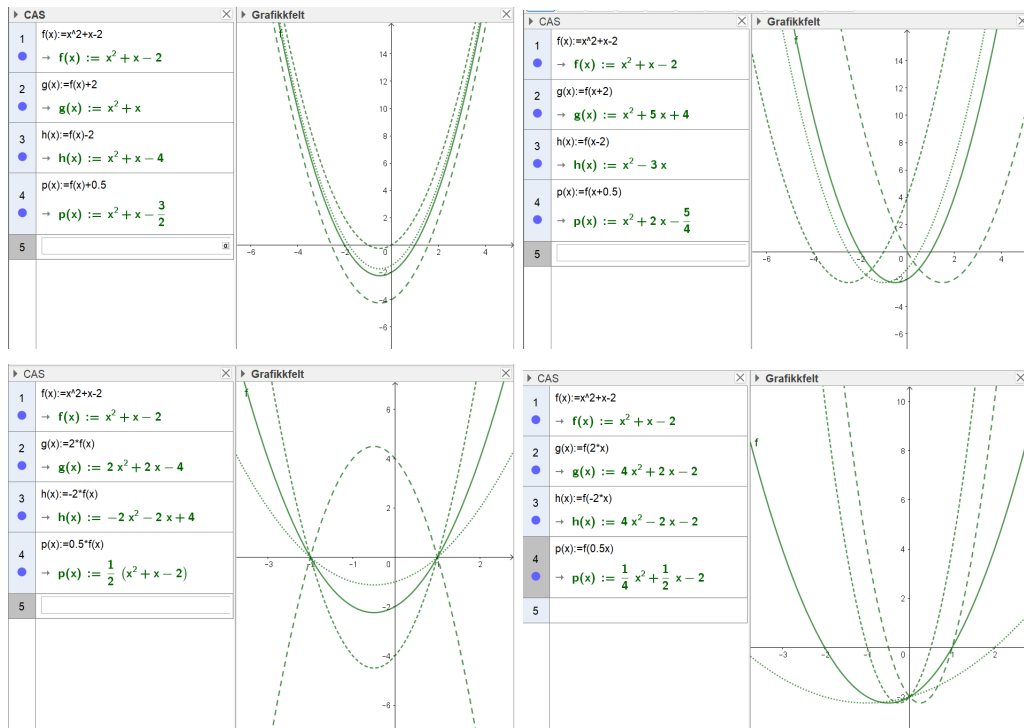
$f(x \pm k)$ flytter horisontalt

$\pm k * f(x)$

$f(\pm k \cdot x)$

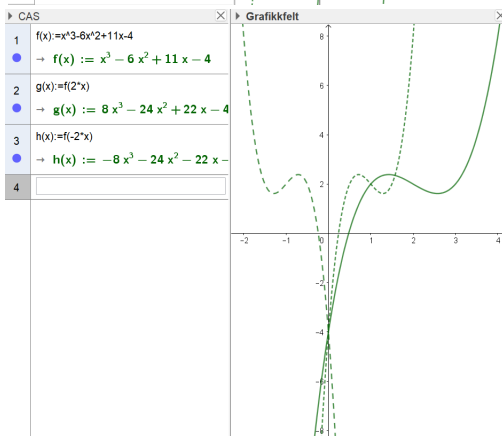
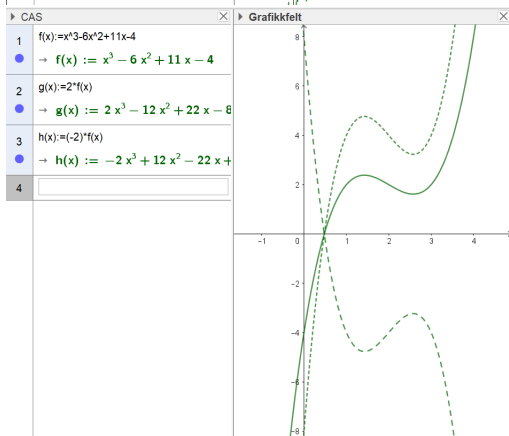
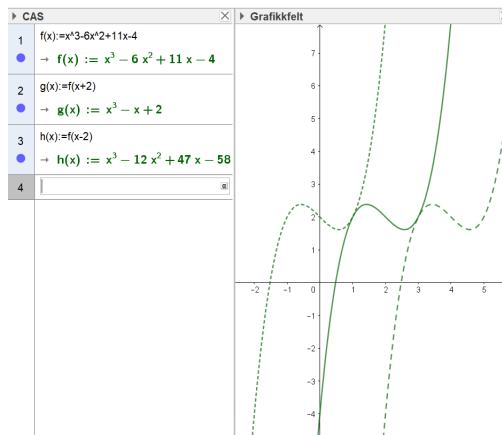
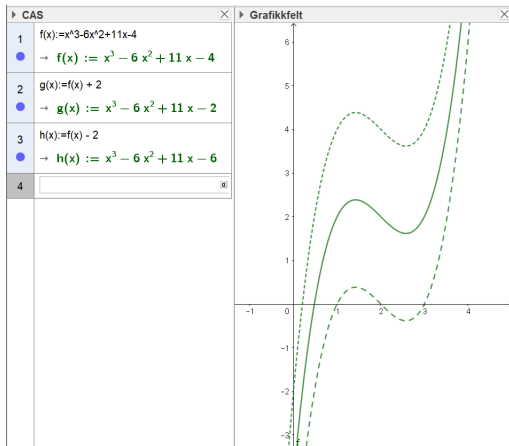
2.gradsfunksjoner

$$f(x) = x^2 + x - 2$$



3.gradsfunksjoner

$$f(x) = x^3 - 6x^2 + 11x - 4$$



"funksjoner- tuning"