

Geogebra

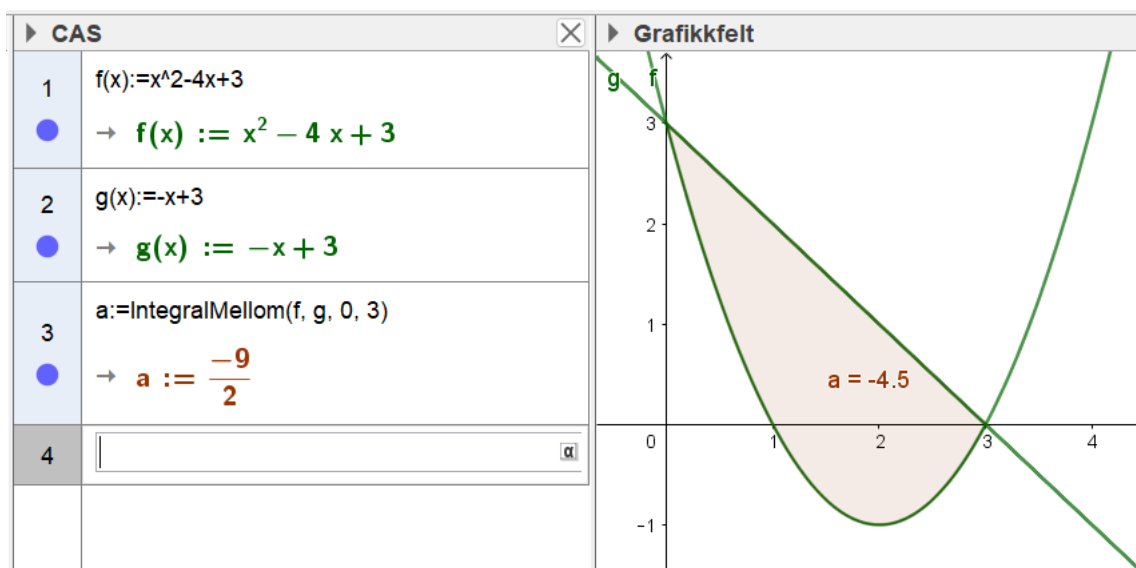
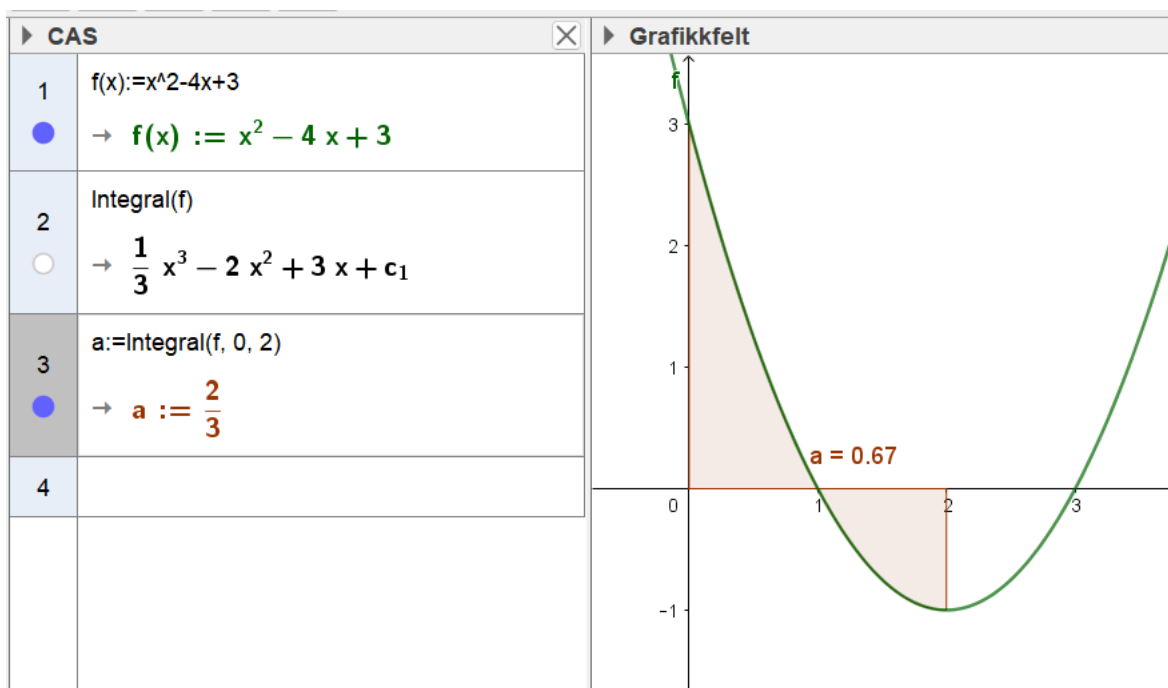
Integralregning

For å regne integraler i Geogebra må vi bruke CAS.

Definere funksjonen - husk å bruke ':='

Ubestemt integral : $\text{Integral}(f(x))$

Bestemt integral : $\text{Integral}(f(x),1,5)$



RektangelSum

$$f(x) = x^3$$

Glider $a = 1 - 10$

RektangelSum(f,1,2,a,b)

$b = 0 \rightarrow$ Venstre

$b = 0,5 \rightarrow$ Midtstilt

$b = 1 \rightarrow$ Høyre

TrapeSum

TrapeSum(f,1,2,a)